



Labour Force Survey Statistics October 2019

CALGARY CMA

Table 14-10-0294-02 (282-0135) Labour force survey estimates (LFS), by census metropolitan area based on 2011 census boundaries, 3-month moving average, seasonally adjusted, monthly (persons unless otherwise noted)							
	October 2018	September 2019	October 2019	# Change September 2019 - October 2019	% Change September 2019 - October 2019	# Change October 2018 - October 2019	% Change October 2018 - October 2019
Population (x 1,000)	1,250.9	1,278.0	1,280.8	2.8	0.2%	29.9	2.4%
Labour force (x 1,000)	909.2	946.4	944.0	-2.4	-0.3%	34.8	3.8%
Employment (x 1,000)	835.9	879.3	876.4	-2.9	-0.3%	40.5	4.8%
Unemployment (x 1,000)	73.3	67.0	67.6	0.6	0.9%	-5.7	-7.8%
Unemployment rate (rate)	8.1%	7.1%	7.2%	0.1%		-0.9%	
Participation rate (rate)	72.7%	74.1%	73.7%	-0.4%		1.0%	
Employment rate (rate)	66.8%	68.8%	68.4%	-0.4%		1.6%	

CALGARY CMA

Table 14-10-0095-01 (282-0128) Labour force survey estimates (LFS), by census metropolitan area based on 2011 census boundaries, 3-month moving average, unadjusted for seasonality, monthly (persons unless otherwise noted)							
	October 2018	September 2019	October 2019	# Change September 2019 - October 2019	% Change September 2019 - October 2019	# Change October 2018 - October 2019	% Change October 2018 - October 2019
Population (x 1,000)	1,250.9	1,278.0	1,280.8	2.8	0.2%	29.9	2.4%
Labour force (x 1,000)	910.1	952.2	944.7	-7.5	-0.8%	34.6	3.8%
Employment (x 1,000)	834.4	881.5	873.0	-8.5	-1.0%	38.6	4.6%
Full-time employment (x 1,000)	678.9	733.1	724.6	-8.5	-1.2%	45.7	6.7%
Part-time employment (x 1,000)	155.5	148.4	148.3	-0.1	-0.1%	-7.2	-4.6%
Unemployment (x 1,000)	75.7	70.7	71.7	1.0	1.4%	-4.0	-5.3%
Not in labour force (x 1,000)	340.7	325.8	336.2	10.4	3.2%	-4.5	-1.3%
Unemployment rate (rate)	8.3%	7.4%	7.6%	0.2%		-0.7%	
Participation rate (rate)	72.8%	74.5%	73.8%	-0.7%		1.0%	
Employment rate (rate)	66.7%	69.0%	68.2%	-0.8%		1.5%	

CALGARY CMA

Table: 14-10-0097-01 (282-0130) Labour force survey estimates (LFS), employment by census metropolitan area based on 2011 census boundaries and North American Industry Classification System (NAICS), 3-month moving average, unadjusted for seasonality, monthly (persons x 1,000)

	October 2018	September 2019	October 2019	# Change September 2019 - October 2019	% Change September 2019 - October 2019	# Change October 2018 - October 2019	% Change October 2018 - October 2019
Total Employed - All Industries	834.4	881.5	873.0	-8.5	-1.0%	38.6	4.6%
Goods-Producing Sector	180.3	182.3	180.1	-2.2	-1.2%	-0.2	-0.1%
Agriculture	2.3	3.6	4.2	0.6	16.7%	1.9	82.6%
Forestry, Fishing, Mining, Quarrying, Oil and Gas	46.6	46.7	47.0	0.3	0.6%	0.4	0.9%
Utilities	10.7	9.5	10.7	1.2	12.6%	0.0	0.0%
Construction	76.3	76.6	75.1	-1.5	-2.0%	-1.2	-1.6%
Manufacturing	44.4	45.9	43.2	-2.7	-5.9%	-1.2	-2.7%
Services-Producing Sector	654.1	699.2	692.9	-6.3	-0.9%	38.8	5.9%
Wholesale & Retail Trade	120.9	113.8	112.5	-1.3	-1.1%	-8.4	-6.9%
Transportation and Warehousing	57.8	57.8	56.4	-1.4	-2.4%	-1.4	-2.4%
Finance, Insurance, Real Estate and Leasing	38.5	46.3	43.2	-3.1	-6.7%	4.7	12.2%
Professional, Scientific and Technical Services	94.8	105.0	105.2	0.2	0.2%	10.4	11.0%
Business, Building and Other Support Services	32.4	34.5	33.1	-1.4	-4.1%	0.7	2.2%
Educational Services	45.9	57.4	62.0	4.6	8.0%	16.1	35.1%
Health Care and Social Assistance	95.2	105.8	108.2	2.4	2.3%	13.0	13.7%
Information, Culture and Recreation	36.9	34.3	32.8	-1.5	-4.4%	-4.1	-11.1%
Accommodation and Food Services	62.3	62.4	62.2	-0.2	-0.3%	-0.1	-0.2%
Other Services	43.7	45.2	43.6	-1.6	-3.5%	-0.1	-0.2%
Public Administration	25.7	36.8	33.7	-3.1	-8.4%	8.0	31.1%

Province of Alberta

Table: 14-10-0287-01 (282-0087) Labour force survey estimates (LFS), by sex and age group, seasonally adjusted, monthly (persons unless otherwise noted)

	October 2018	September 2019	October 2019	# Change September 2019 - October 2019	% Change September 2019 - October 2019	# Change October 2018 - October 2019	% Change October 2018 - October 2019
Population (x 1,000)	3,486.3	3,540.5	3,545.9	5.4	0.2%	59.6	1.7%
Labour force (x 1,000)	2,517.4	2,515.3	2,526.5	11.2	0.45%	9.1	0.4%
Employment (x 1,000)	2,336.9	2,349.2	2,356.9	7.7	0.3%	20.0	0.9%
Employment full-time (x 1,000)	1,921.1	1,922.1	1,936.5	14.4	0.7%	15.4	0.8%
Employment part-time (x 1,000)	415.8	427.1	420.4	-6.7	-1.6%	4.6	1.1%
Unemployment (x 1,000)	180.5	166.2	169.6	3.4	2.0%	-10.9	-6.0%
Unemployment rate (rate)	7.2%	6.6%	6.7%	0.1%		-0.5%	
Participation rate (rate)	72.2%	71.0%	71.3%	0.3%		-0.9%	
Employment rate (rate)	67.0%	66.4%	66.5%	0.1%		-0.5%	

Province of Alberta

Table: 14-10-0355-01 (282-0088) Labour force survey estimates (LFS), employment by North American Industry Classification System (NAICS), seasonally adjusted, monthly (persons x 1,000)

	October 2018	September 2019	October 2019	# Change September 2019 - October 2019	% Change September 2019 - October 2019	# Change October 2018 - October 2019	% Change September 2018 - September 2019
Total Employed - All Industries	2,336.9	2,349.2	2,356.9	7.7	0.3%	20.0	0.9%
Goods-Producing Sector	597.4	587.1	588.6	1.5	0.3%	-8.8	-1.5%
Agriculture	46.3	51.9	52.1	0.2	0.4%	5.8	12.5%
Forestry, Fishing, Mining, Quarrying, Oil and Gas	152.4	138.6	140.2	1.6	1.2%	-12.2	-8.0%
Utilities	23.8	24.2	24.8	0.6	2.5%	1.0	4.2%
Construction	247.7	236.3	236.6	0.3	0.1%	-11.1	-4.5%
Manufacturing	127.2	136.1	134.8	-1.3	-1.0%	7.6	6.0%
Services-Producing Sector	1,739.5	1,762.1	1,768.3	6.2	0.4%	28.8	1.7%
Wholesale & Retail Trade	332.0	333.7	337.8	4.1	1.2%	5.8	1.7%
Transportation and Warehousing	139.2	138.1	137.0	-1.1	-0.8%	-2.2	-1.6%
Finance, Insurance, Real Estate and Leasing	106.0	105.2	107.6	2.4	2.3%	1.6	1.5%
Professional, Scientific and Technical Services	181.0	187.1	189.9	2.8	1.5%	8.9	4.9%
Business, Building and Other Support Services	88.8	78.6	81.7	3.1	3.9%	-7.1	-8.0%
Educational Services	154.0	161.9	159.1	-2.8	-1.7%	5.1	3.3%
Health Care and Social Assistance	280.9	298.9	304.7	5.8	1.9%	23.8	8.5%
Information, Culture and Recreation	77.8	76.3	75.4	-0.9	-1.2%	-2.4	-3.1%
Accommodation and Food Services	147.8	146.5	149.0	2.5	1.7%	1.2	0.8%
Other Services	115.8	119.0	112.9	-6.1	-5.1%	-2.9	-2.5%
Public Administration	116.1	116.7	113.2	-3.5	-3.0%	-2.9	-2.5%

CANADA

**Table: 14-10-0287-01 (282-0087) Labour force survey estimates (LFS), by sex and age group, seasonally adjusted, monthly
(persons unless otherwise noted)**

	October 2018	September 2019	October 2019	# Change September 2019 - October 2019	% Change September 2019 - October 2019	# Change October 2018 - October 2019	% Change October 2018 - October 2019
Population (x 1,000)	30,419.6	30,854.9	30,896.0	41.1	0.1%	476.4	1.6%
Labour force (x 1,000)	19,858.8	20,278.4	20,286.0	7.6	0.04%	427.2	2.2%
Employment (x 1,000)	18,720.9	19,165.2	19,163.4	-1.8	-0.009%	442.5	2.4%
Employment full-time (x 1,000)	15,197.9	15,552.3	15,536.2	-16.1	-0.1%	338.3	2.2%
Employment part-time (x 1,000)	3,523.1	3,612.9	3,627.2	14.3	0.4%	104.1	3.0%
Unemployment (x 1,000)	1,137.8	1,113.2	1,122.7	9.5	0.9%	-15.1	-1.3%
Unemployment rate (rate)	5.7%	5.5%	5.5%	0.0%		-0.2%	
Participation rate (rate)	65.3%	65.7%	65.7%	0.0%		0.4%	
Employment rate (rate)	61.5%	62.1%	62.0%	-0.1%		0.5%	

CANADA

Table: 14-10-0355-01 (282-0088) Labour force survey estimates (LFS), employment by North American Industry Classification System (NAICS), seasonally adjusted, monthly (persons x 1,000)

	October 2018	September 2019	October 2019	# Change September 2019- October 2019	% Change September 2019- October 2019	# Change October 2018 - October 2019	% Change September 2018 - September
Total Employed - All Industries	18,720.9	19,165.2	2,356.9	-16,808.3	-87.7%	-16,364.0	-87.4%
Goods-Producing Sector	3,929.5	3,974.3	3,933.4	-40.9	-1.0%	3.9	0.1%
Agriculture	276.8	288.8	291.4	2.6	0.9%	14.6	5.3%
Forestry, Fishing, Mining, Quarrying, Oil and Gas	339.3	321.3	322.9	1.6	0.5%	-16.4	-4.8%
Utilities	150.5	136.0	135.2	-0.8	-0.6%	-15.3	-10.2%
Construction	1,443.1	1,481.8	1,460.5	-21.3	-1.4%	17.4	1.2%
Manufacturing	1,719.9	1,746.5	1,723.4	-23.1	-1.3%	3.5	0.2%
Services-Producing Sector	14,791.5	15,190.9	15,229.9	39.0	0.3%	438.4	3.0%
Trade	2,795.4	2,845.6	2,848.9	3.3	0.1%	53.5	1.9%
Transportation and Warehousing	1,005.7	1,039.5	1,037.2	-2.3	-0.2%	31.5	3.1%
Finance, Insurance, Real Estate and Leasing	1,172.4	1,218.5	1,236.3	17.8	1.5%	63.9	5.5%
Professional, Scientific and Technical Services	1,469.8	1,576.8	1,579.0	2.2	0.1%	109.2	7.4%
Business, Building and Other Support Services	794.5	757.5	757.9	0.4	0.1%	-36.6	-4.6%
Educational Services	1,340.5	1,390.0	1,395.2	5.2	0.4%	54.7	4.1%
Health Care and Social Assistance	2,430.8	2,524.2	2,525.4	1.2	0.0%	94.6	3.9%
Information, Culture and Recreation	775.2	763.3	766.9	3.6	0.5%	-8.3	-1.1%
Accommodation and Food Services	1,238.1	1,226.0	1,231.4	5.4	0.4%	-6.7	-0.5%
Other Services	797.1	824.6	806.7	-17.9	-2.2%	9.6	1.2%
Public Administration	971.8	1,025.1	1,045.2	20.1	2.0%	73.4	7.6%

Unemployment Rates for Key Markets

	October 2018	September 2019	October 2019
Calgary	8.1%	7.1%	7.2%
Alberta	7.2%	6.6%	6.7%
Canada	5.7%	5.5%	5.5%
Montreal	6.1%	5.6%	5.5%
Ottawa	4.5%	4.7%	4.4%
Toronto	6.1%	4.7%	4.4%
Edmonton	6.3%	7.4%	7.3%
Vancouver	4.5%	4.4%	4.6%
Winnipeg	6.2%	5.5%	5.3%
Regina	6.5%	5.2%	5.7%
Saskatoon	7.3%	5.8%	5.8%
Wood Buffalo			

Facts & Figures

Highest Unemployment Rate during 2008-2010 downturn: 7.5% in January 2010

Highest Unemployment Rate during 1992-1996 downturn: 10.8% in July 1993
Number of additional jobs we would need to lose to reach this level: 34,352
(or amount labour force would need to grow by with no additional new jobs)

Highest Unemployment Rate during 1982-1985 downturn: 13.2% in March 1983
Number of additional jobs we would need to lose to reach this level: 57,008
(or amount labour force would need to grow by with no additional new jobs)

The last time Calgary had negative employment growth:

Between November 2009 and May 2010 Calgary lost 12,900 jobs.

Between November 2008 and July 2009 Calgary lost 27,000 jobs.

From peak employment in November 2008 to the lowest level reached in May 2010 - 33,400 jobs were lost in Calgary.

Calgary lost a small number of jobs July-August 2012 (2,400), again in March 2013 (3,200), and again (3,300) in February to April 2014.

Calgary

Number of jobs gained/lost in 2014:	17,600
Number of jobs gained/lost in 2015:	(8,100)
Number of jobs gained/lost December 2014 to June 2016:	(13,300)
Number of jobs gained/lost in 2016:	14,400
Number of jobs gained/lost in 2017:	15,500
Number of jobs gained/lost in 2018:	10,100
Number of jobs gained/lost in 2019:	30,900

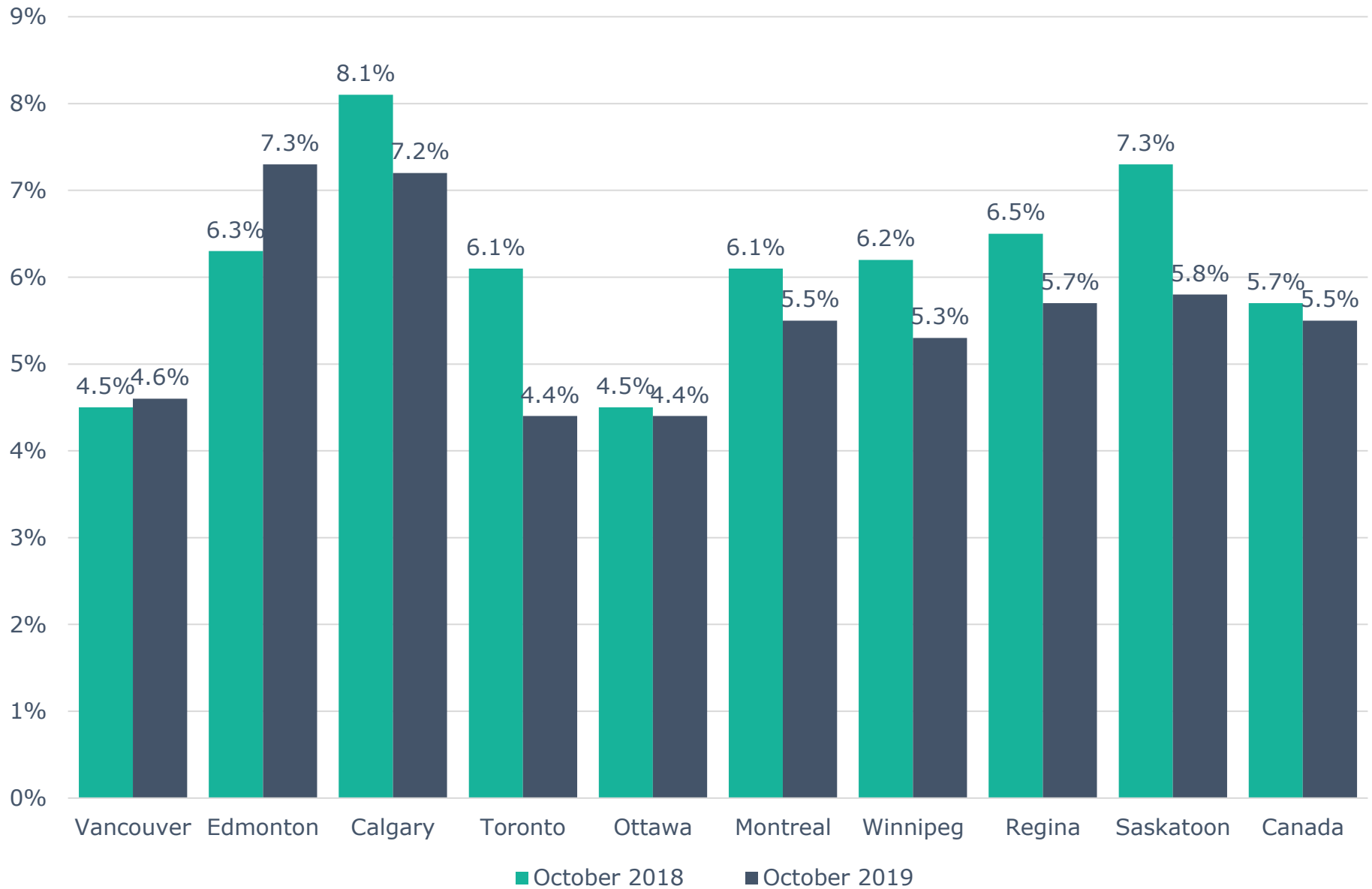
Alberta

Number of jobs gained/lost in 2014:	59,900
Number of jobs gained/lost in 2015:	(20,500)
Number of jobs gained/lost December 2014 to June 2016:	(46,100)
Number of jobs gained/lost in 2016:	(15,700)
Number of jobs gained/lost in 2017:	54,900
Number of jobs gained/lost in 2018:	21,300
Number of jobs gained/lost in 2019:	30,500

Source: Calgary - Table 14-10-0294-02 (282-0135); Alberta - 14-10-0287-01 (282-0087); Statistics Canada

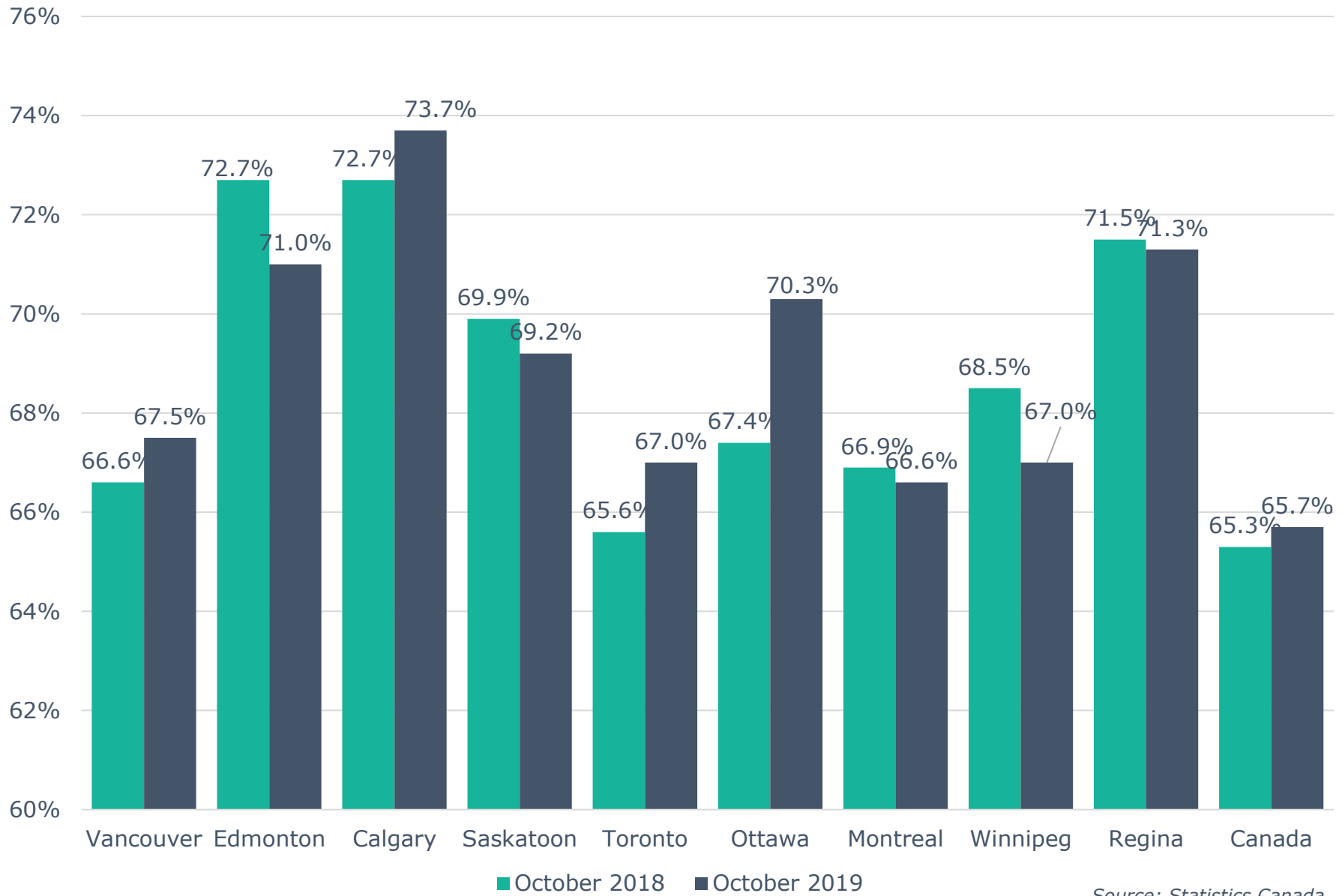
Note: Labour Force Survey, Employment, Seasonally Adjusted

Unemployment Rate Across Canada



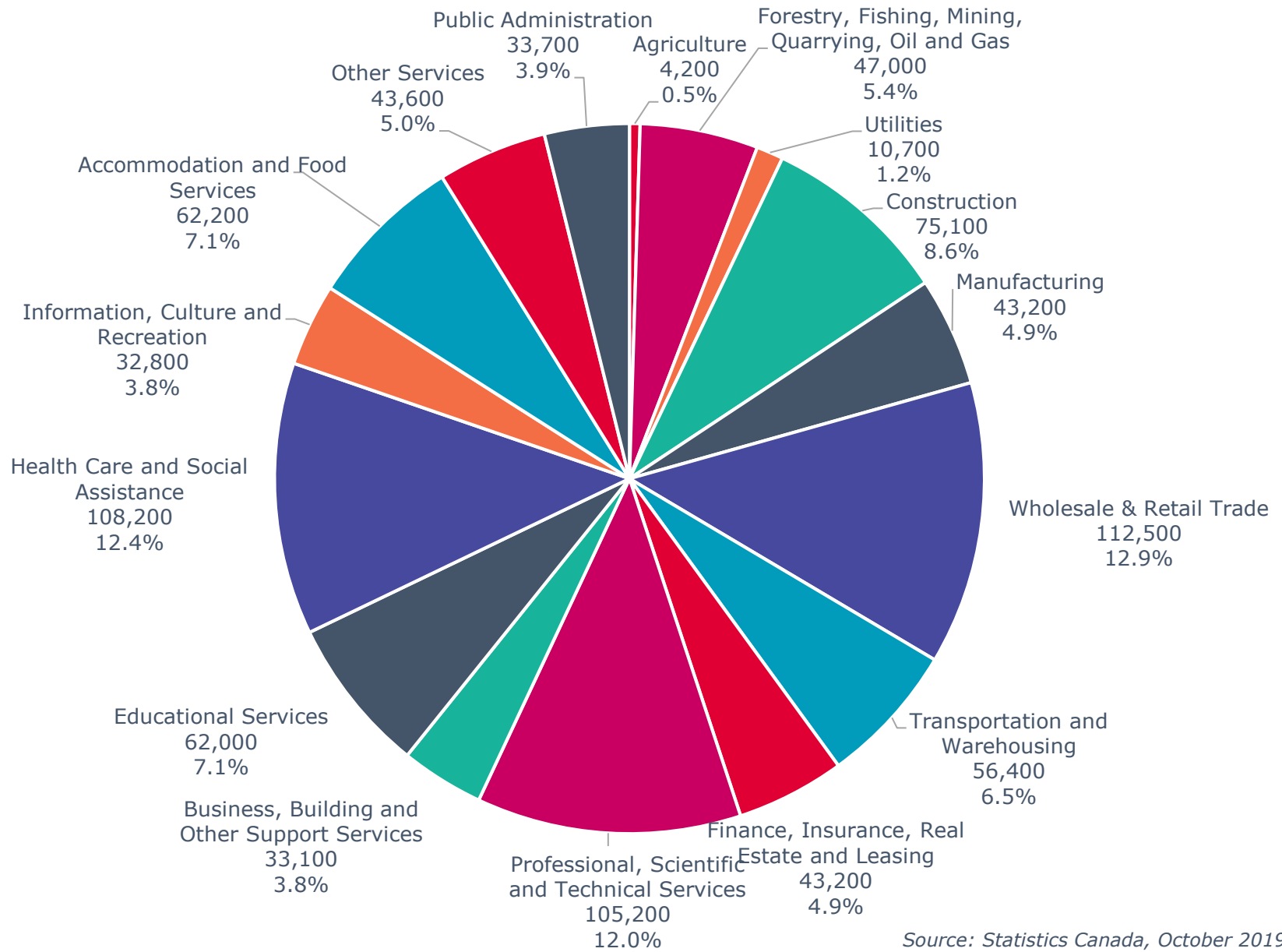
Source: Statistics Canada

Labour Force Participation Rate Across Canada



Source: Statistics Canada

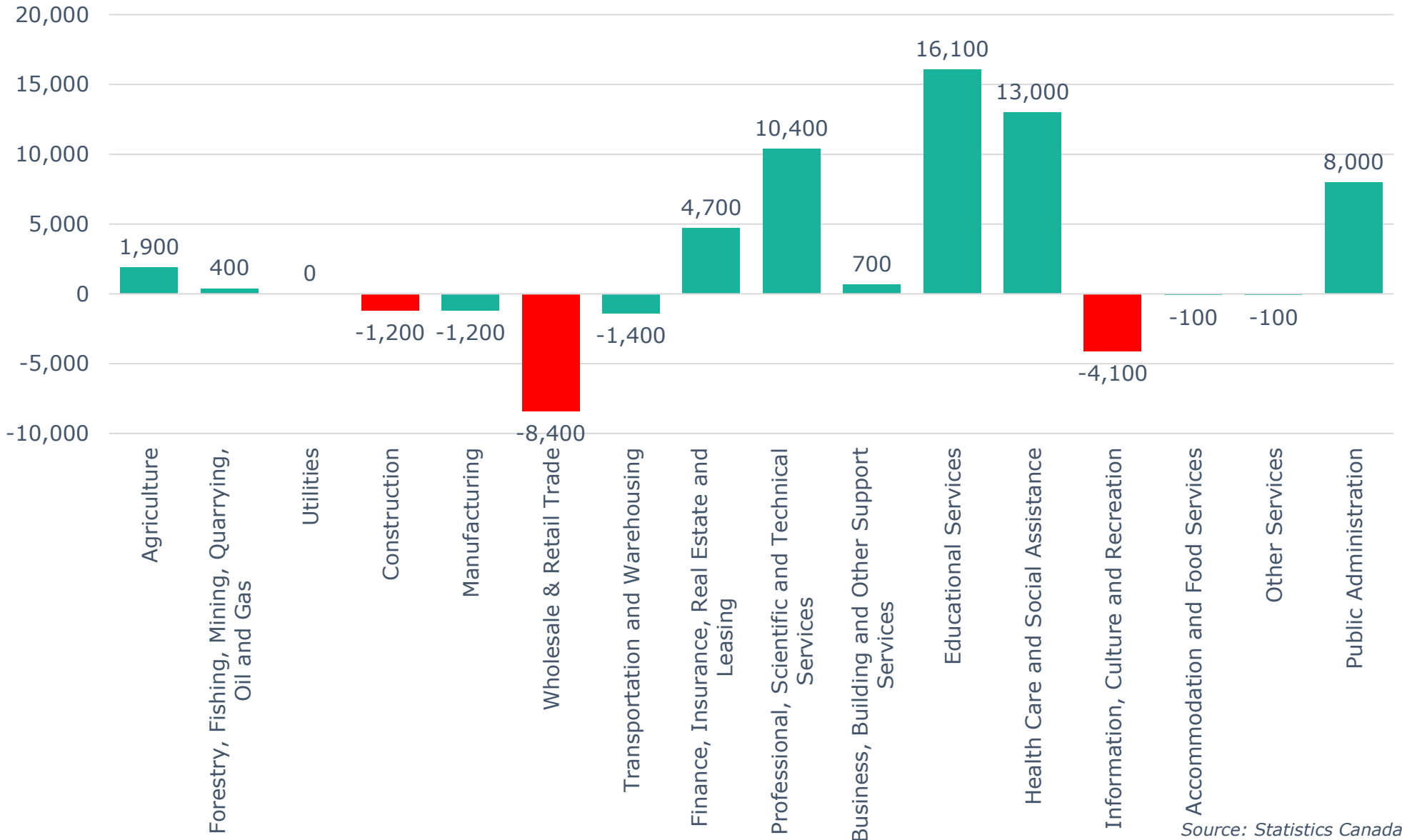
Calgary CMA Employment by Industry (873,000)



Source: Statistics Canada, October 2019

Calgary CMA 12-Month Net Jobs Gained or Lost by Industry

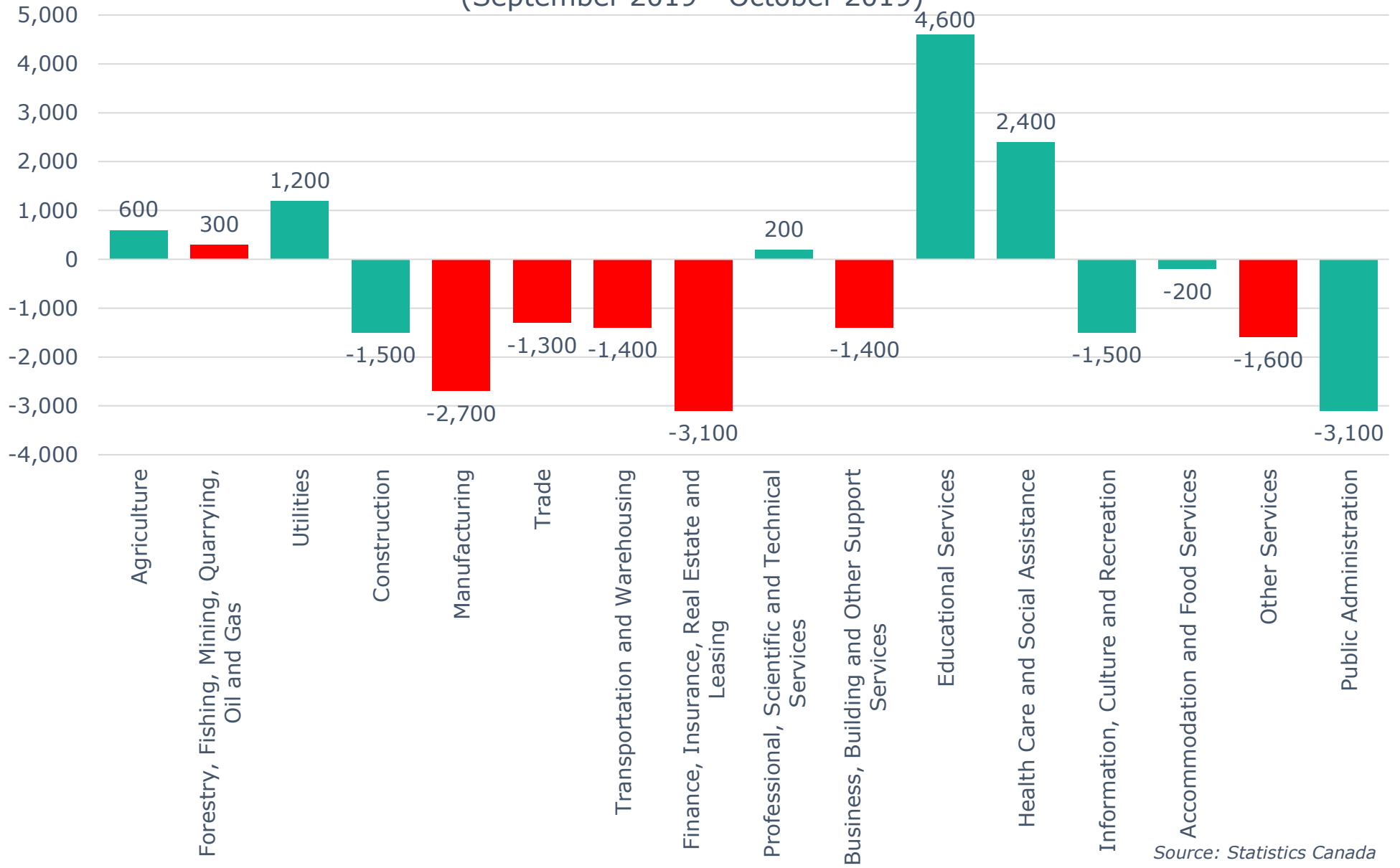
(October 2019)



Source: Statistics Canada

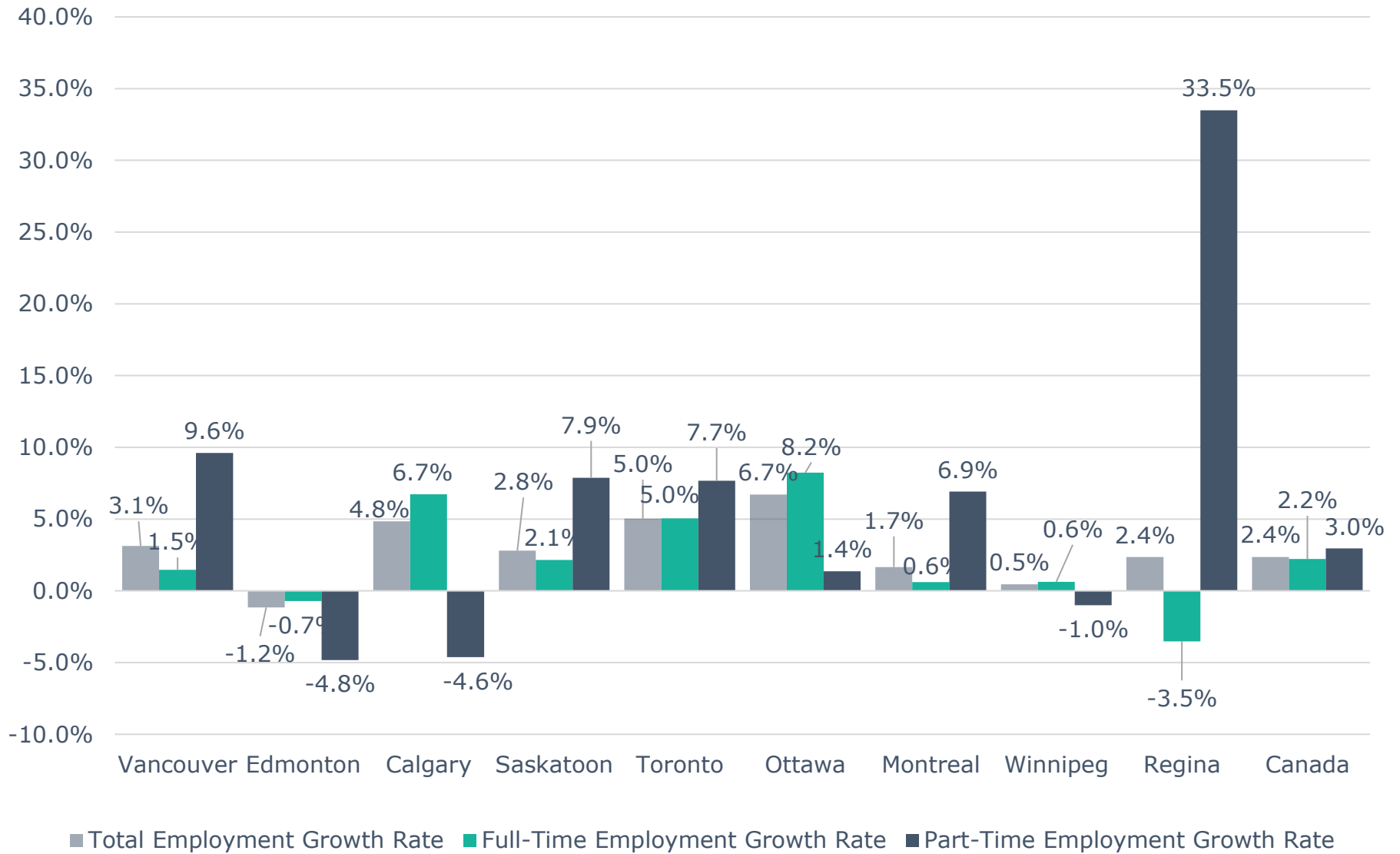
Calgary CMA Monthly Net Jobs Gained or Lost by Industry

(September 2019 - October 2019)



Source: Statistics Canada

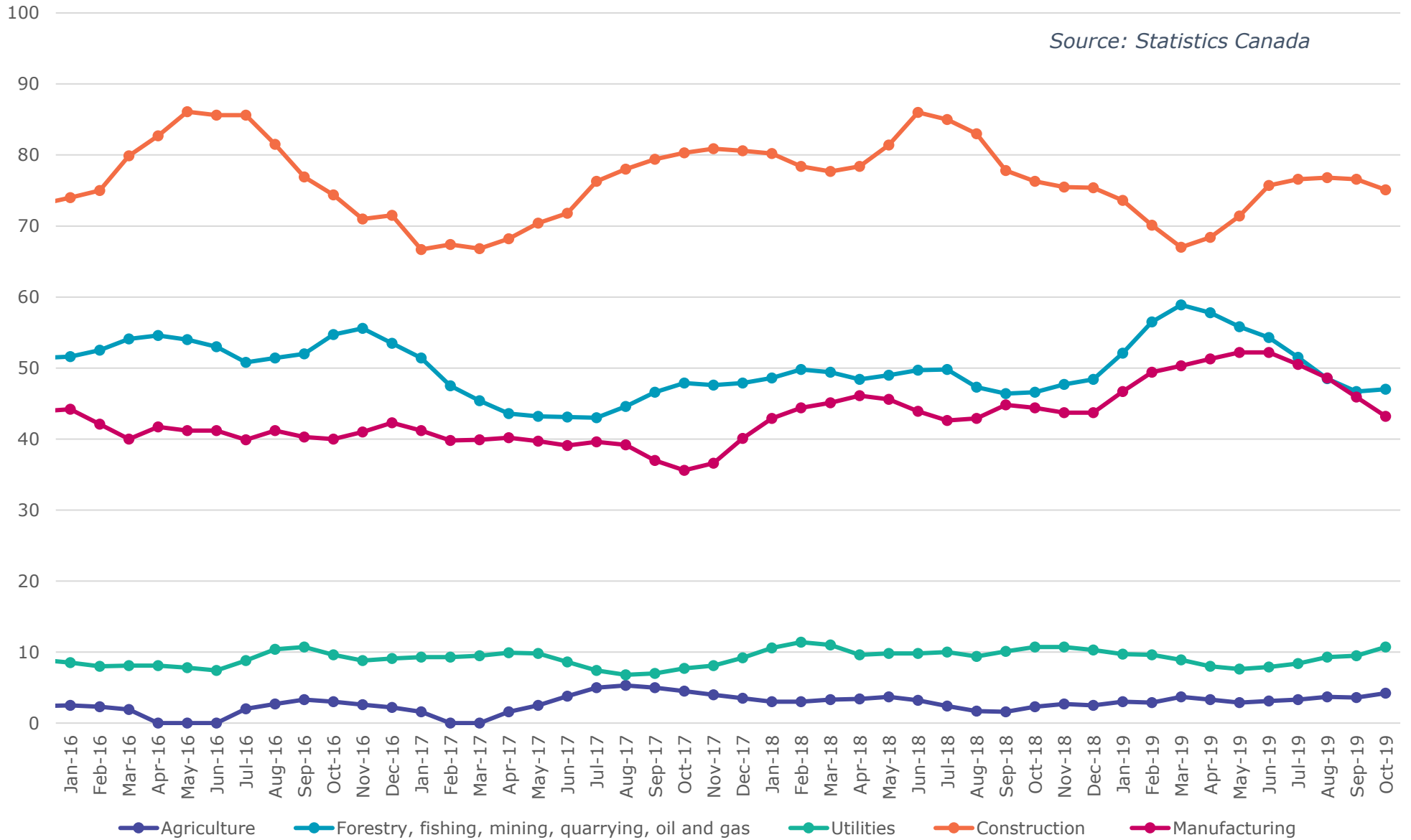
Annual Employment Growth



Source: Statistics Canada, October 2018 - October 2019

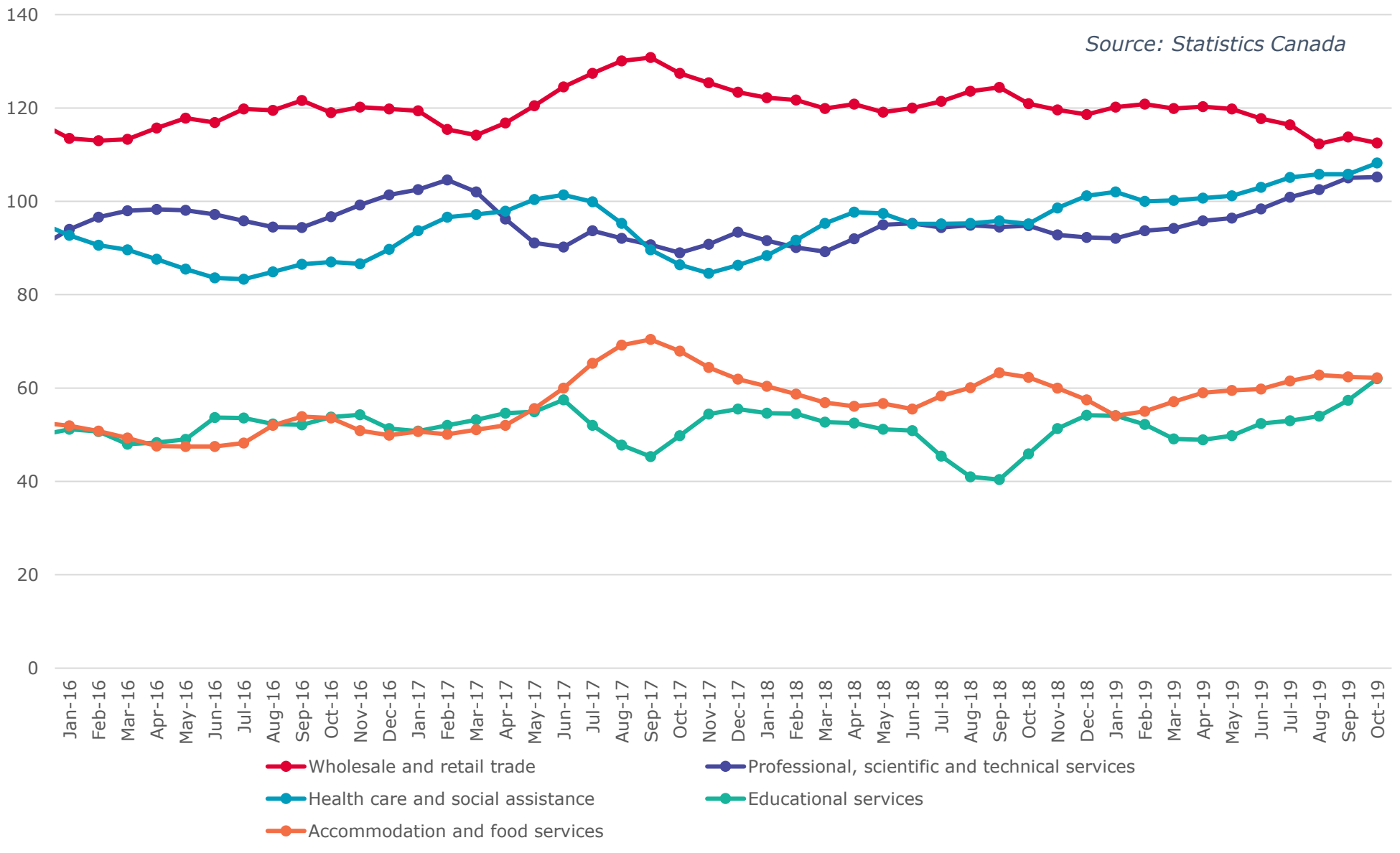
Calgary CMA Goods Producing Sectors - Number of Employees (In thousands)

Source: Statistics Canada



Calgary CMA Largest 5 Services Sector by Number of Employees (In thousands)

Source: Statistics Canada



Calgary CMA Smallest 6 Service Sectors by Number of Employees (In thousands)

