



Labour Force Survey Statistics March 2021

## CALGARY CMA

**Table 14-10-0380-02 (282-0135) Labour force survey estimates (LFS), by census metropolitan area based on 2011 census boundaries, 3-month moving average, seasonally adjusted, monthly (persons unless otherwise noted)**

	March 2020	February 2021	March 2021	# Change February 2021 - March 2021	% Change February 2021 - March 2021	# Change March 2020 - March 2021	% Change March 2020 - March 2021
Population (x 1,000)	1,241.5	1,259.1	1,260.6	1.5	0.1%	19.1	1.5%
Labour force (x 1,000)	875.5	901.6	894.4	-7.2	-0.8%	18.9	2.2%
Employment (x 1,000)	797.5	806.3	805.4	-0.9	-0.1%	7.9	1.0%
Unemployment (x 1,000)	78.0	95.3	89.0	-6.3	-6.6%	11.0	14.1%
Unemployment rate (rate)	8.9%	10.6%	10.0%	-0.6%		1.1%	
Participation rate (rate)	70.5%	71.6%	71.0%	-0.6%		0.5%	
Employment rate (rate)	64.2%	64.0%	63.9%	-0.1%		-0.3%	

## CALGARY CMA

**Table 14-10-0378-01 (282-0128) Labour force survey estimates (LFS), by census metropolitan area based on 2011 census boundaries, 3-month moving average, unadjusted for seasonality, monthly (persons unless otherwise noted)**

	March 2020	February 2021	March 2021	# Change February 2021 - March 2021	% Change February 2021 - March 2021	# Change March 2020 - March 2021	% Change March 2020 - March 2021
Population (x 1,000)	1,241.5	1,259.1	1,260.6	1.5	0.1%	19.1	1.5%
Labour force (x 1,000)	867.9	895.0	886.9	-8.1	-0.9%	19.0	2.2%
Employment (x 1,000)	788.6	801.2	796.0	-5.2	-0.6%	7.4	0.9%
Full-time employment (x 1,000)	647.3	649.3	639.0	-10.3	-1.6%	-8.3	-1.3%
Part-time employment (x 1,000)	141.3	151.9	157.0	5.1	3.4%	15.7	11.1%
Unemployment (x 1,000)	79.4	93.7	90.9	-2.8	-3.0%	11.5	14.5%
Not in labour force (x 1,000)	373.6	364.2	373.7	9.5	2.6%	0.1	0.0%
Unemployment rate (rate)	9.1%	10.5%	10.2%	-0.3%		1.1%	
Participation rate (rate)	69.9%	71.1%	70.4%	-0.7%		0.5%	
Employment rate (rate)	63.5%	63.6%	63.1%	-0.5%		-0.4%	

## CALGARY CMA

**Table: 14-10-0397-01 (282-0130) Labour force survey estimates (LFS), employment by census metropolitan area based on 2011 census boundaries and North American Industry Classification System (NAICS), 3-month moving average, unadjusted for seasonality, monthly (persons x 1,000)**

	March 2020	February 2021	March 2021	# Change February 2021 - March 2021	% Change February 2021 - March 2021	# Change March 2020 - March 2021	% Change March 2020 - March 2021
Total Employed - All Industries	788.6	801.2	796.0	-5.2	-0.6%	7.4	0.9%
Goods-Producing Sector	162.6	179.0	175.8	-3.2	-1.8%	13.2	8.1%
Agriculture	2.5	2.5	2.8	30.0%	12.0%	0.3	12.0%
Forestry, Fishing, Mining, Quarrying, Oil and Gas	49.0	56.1	56.2	0.1	0.2%	7.2	14.7%
Utilities	9.1	8.8	9.6	0.8	9.1%	0.5	5.5%
Construction	65.9	70.0	66.6	-3.4	-4.9%	0.7	1.1%
Manufacturing	36.1	41.6	40.6	-1.0	-2.4%	4.5	12.5%
Services-Producing Sector	626.0	622.2	620.3	-1.9	-0.3%	-5.7	-0.9%
Wholesale & Retail Trade	105.0	106.8	105.2	-1.6	-1.5%	0.2	0.2%
Transportation and Warehousing	51.9	49.9	49.9	0.0	0.0%	-2.0	-3.9%
Finance, Insurance, Real Estate and Leasing	36.7	45.5	45.2	-0.3	-0.7%	8.5	23.2%
Professional, Scientific and Technical Services	89.5	89.5	90.1	0.6	0.7%	0.6	0.7%
Business, Building and Other Support Services	26.4	25.5	26.1	0.6	2.4%	-0.3	-1.1%
Educational Services	64.2	69.2	72.2	3.0	4.3%	8.0	12.5%
Health Care and Social Assistance	112.1	109.6	109.2	-0.4	-0.4%	-2.9	-2.6%
Information, Culture and Recreation	29.8	25.9	24.0	-1.9	-7.3%	-5.8	-19.5%
Accommodation and Food Services	50.7	47.6	45.4	-2.2	-4.6%	-5.3	-10.5%
Other Services	32.7	34.1	35.0	0.9	2.6%	2.3	7.0%
Public Administration	26.9	18.7	18.0	-0.7	-3.7%	-8.9	-33.1%

## Province of Alberta

**Table: 14-10-0287-01 (282-0087) Labour force survey estimates (LFS), by sex and age group, seasonally adjusted, monthly (persons unless otherwise noted)**

	March 2020	February 2021	March 2021	# Change February 2021 - March 2021	% Change February 2021 - March 2021	# Change March 2020 - March 2021	% Change March 2020 - March 2021
Population (x 1,000)	3,495.8	3,531.3	3,533.5	2.2	0.1%	37.7	1.1%
Labour force (x 1,000)	2,381.4	2,440.3	2,458.7	18.4	0.75%	77.3	3.2%
Employment (x 1,000)	2,163.7	2,198.2	2,235.3	37.1	1.7%	71.6	3.3%
Employment full-time (x 1,000)	1,804.0	1,781.0	1,792.9	11.9	0.7%	-11.1	-0.6%
Employment part-time (x 1,000)	359.8	417.3	442.4	25.1	6.0%	82.6	23.0%
Unemployment (x 1,000)	217.7	242.1	223.4	-18.7	-7.7%	5.7	2.6%
Unemployment rate (rate)	9.1%	9.9%	9.1%	-0.8%		0.0%	
Participation rate (rate)	68.1%	69.1%	69.6%	0.5%		1.5%	
Employment rate (rate)	61.9%	62.2%	63.3%	1.1%		1.4%	

## Province of Alberta

**Table: 14-10-0355-01 (282-0088) Labour force survey estimates (LFS), employment by North American Industry Classification System (NAICS), seasonally adjusted, monthly (persons x 1,000)**

	March 2020	February 2021	March 2021	# Change February 2021 - March 2021	% Change February 2021 - March 2021	# Change March 2020 - March 2021	% Change March 2020 - March 2021
Total Employed - All Industries	2,163.7	2,198.2	2,235.3	37.1	1.7%	71.6	3.3%
Goods-Producing Sector	581.3	541.9	553.1	11.2	2.1%	-28.2	-4.9%
Agriculture	47.5	38.5	39.8	1.3	3.4%	-7.7	-16.2%
Forestry, Fishing, Mining, Quarrying, Oil and Gas	142.1	135.6	140.0	4.4	3.2%	-2.1	-1.5%
Utilities	24.7	23.8	24.9	1.1	4.6%	0.2	0.8%
Construction	231.4	224.3	227.5	3.2	1.4%	-3.9	-1.7%
Manufacturing	135.6	119.7	120.9	1.2	1.0%	-14.7	-10.8%
Services-Producing Sector	1,582.5	1,656.3	1,682.1	25.8	1.6%	99.6	6.3%
Wholesale & Retail Trade	305.8	336.0	339.3	3.3	1.0%	33.5	11.0%
Transportation and Warehousing	119.1	129.9	130.6	0.7	0.5%	11.5	9.7%
Finance, Insurance, Real Estate and Leasing	97.2	107.6	109.1	1.5	1.4%	11.9	12.2%
Professional, Scientific and Technical Services	179.7	174.4	181.8	7.4	4.2%	2.1	1.2%
Business, Building and Other Support Services	72.8	77.0	73.8	-3.2	-4.2%	1.0	1.4%
Educational Services	153.6	161.4	172.9	11.5	7.1%	19.3	12.6%
Health Care and Social Assistance	278.8	308.3	310.3	2.0	0.6%	31.5	11.3%
Information, Culture and Recreation	61.0	58.2	61.1	2.9	5.0%	0.1	0.2%
Accommodation and Food Services	111.3	104.5	104.3	-0.2	-0.2%	-7.0	-6.3%
Other Services	98.2	99.5	99.5	0.0	0.0%	1.3	1.3%
Public Administration	105.0	99.6	99.4	-0.2	-0.2%	-5.6	-5.3%

## CANADA

**Table: 14-10-0287-01 (282-0087) Labour force survey estimates (LFS), by sex and age group, seasonally adjusted, monthly (persons unless otherwise noted)**

	March 2020	February 2021	March 2021	# Change February 2021 - March 2021	% Change February 2021 - March 2021	# Change March 2020 - March 2021	% Change March 2020 - March 2021
Population (x 1,000)	30,978.8	31,216.2	31,234.5	18.3	0.1%	255.7	0.8%
Labour force (x 1,000)	19,687.6	20,196.2	20,351.1	154.9	0.77%	663.5	3.4%
Employment (x 1,000)	18,133.8	18,531.2	18,834.3	303.1	1.636%	700.5	3.9%
Employment full-time (x 1,000)	15,086.2	15,220.5	15,395.9	175.4	1.2%	309.7	2.1%
Employment part-time (x 1,000)	3,047.6	3,310.7	3,438.5	127.8	3.9%	390.9	12.8%
Unemployment (x 1,000)	1,553.8	1,665.1	1,516.7	-148.4	-8.9%	-37.1	-2.4%
Unemployment rate (rate)	7.9%	8.2%	7.5%	-0.7%		-0.4%	
Participation rate (rate)	63.6%	64.7%	65.2%	0.5%		1.6%	
Employment rate (rate)	58.5%	59.4%	60.3%	0.9%		1.8%	

## CANADA

**Table: 14-10-0355-01 (282-0088) Labour force survey estimates (LFS), employment by North American Industry Classification System (NAICS), seasonally adjusted, monthly (persons x 1,000)**

	March 2020	February 2021	March 2021	# Change February 2021 - March 2021	% Change February 2021 - March 2021	# Change March 2020 - March 2021	% Change March 2020 - March 2021
Total Employed - All Industries	18,133.8	18,531.2	18,834.3	303.1	1.6%	700.5	3.9%
Goods-Producing Sector	3,938.9	3,912.8	3,956.0	43.2	1.1%	17.1	0.4%
Agriculture	286.2	262.7	265.2	2.5	1.0%	-21.0	-7.3%
Forestry, Fishing, Mining, Quarrying, Oil and Gas	317.1	316.8	323.8	7.0	2.2%	6.7	2.1%
Utilities	134.3	143.9	143.8	-0.1	-0.1%	9.5	7.1%
Construction	1,492.1	1,442.4	1,468.1	25.7	1.8%	-24.0	-1.6%
Manufacturing	1,709.3	1,746.9	1,755.1	8.2	0.5%	45.8	2.7%
Services-Producing Sector	14,194.9	14,618.4	14,878.4	260.0	1.8%	683.5	4.8%
Wholesale and retail trade	2,664.7	2,752.4	2,844.2	91.8	3.3%	179.5	6.7%
Transportation and Warehousing	992.4	981.2	973.9	-7.3	-0.7%	-18.5	-1.9%
Finance, Insurance, Real Estate and Leasing	1,217.7	1,278.2	1,279.3	1.1	0.1%	61.6	5.1%
Professional, Scientific and Technical Services	1,545.6	1,623.8	1,629.7	5.9	0.4%	84.1	5.4%
Business, Building and Other Support Services	732.0	695.5	706.8	11.3	1.6%	-25.2	-3.4%
Educational Services	1,261.5	1,433.6	1,468.6	35.0	2.4%	207.1	16.4%
Health Care and Social Assistance	2,422.9	2,503.9	2,550.7	46.8	1.9%	127.8	5.3%
Information, Culture and Recreation	671.0	656.5	718.0	61.5	9.4%	47.0	7.0%
Accommodation and Food Services	930.1	902.3	923.7	21.4	2.4%	-6.4	-0.7%
Other Services	763.0	758.5	755.5	-3.0	-0.4%	-7.5	-1.0%
Public Administration	994.0	1,032.6	1,027.9	-4.7	-0.5%	33.9	3.4%

### Unemployment Rates for Key Markets

	<b>March 2020</b>	<b>February 2021</b>	<b>March 2021</b>
<b>Calgary</b>	8.9%	10.6%	10.0%
<b>Alberta</b>	9.1%	9.9%	9.1%
<b>Canada</b>	7.9%	8.2%	7.5%
<b>Montreal</b>	6.4%	8.2%	8.3%
<b>Ottawa</b>	5.2%	6.5%	6.5%
<b>Toronto</b>	6.0%	6.5%	6.5%
<b>Edmonton</b>	8.2%	11.6%	11.2%
<b>Vancouver</b>	5.3%	7.9%	8.0%
<b>Winnipeg</b>	5.5%	8.3%	7.8%
<b>Regina</b>	7.4%	8.5%	8.6%
<b>Saskatoon</b>	7.2%	8.4%	8.2%
<b>Wood Buffalo</b>			



# Facts & Figures

**Highest Unemployment Rate during 2008-2010 downturn:** 7.5% in January 2010

**Highest Unemployment Rate during 1992-1996 downturn:** 10.8% in July 1993  
Number of additional jobs we would need to lose to reach this level: 7,595  
(or amount labour force would need to grow by with no additional new jobs)

**Highest Unemployment Rate during 1982-1985 downturn:** 13.2% in March 1983  
Number of additional jobs we would need to lose to reach this level: 29,061  
(or amount labour force would need to grow by with no additional new jobs)

## **The last time Calgary had negative employment growth:**

Between November 2009 and May 2010 Calgary lost 12,900 jobs.  
Between November 2008 and July 2009 Calgary lost 27,000 jobs.  
From peak employment in November 2008 to the lowest level reached in May 2010 - 33,400 jobs were lost in Calgary.

Calgary lost a small number of jobs July-August 2012 (2,400), again in March 2013 (3,200), and again (3,300) in February to April 2014.

## **Calgary**

<b>Number of jobs gained/lost in 2014:</b>	11,300
<b>Number of jobs gained/lost in 2015:</b>	(16,200)
<b>Number of jobs gained/lost December 2014 to June 2016:</b>	(23,100)
<b>Number of jobs gained/lost in 2016:</b>	12,700
<b>Number of jobs gained/lost in 2017:</b>	14,400
<b>Number of jobs gained/lost in 2018:</b>	8,800
<b>Number of jobs gained/lost in 2019:</b>	14,400
<b>Number of jobs gained/lost in 2020:</b>	(5,600)
<b>Number of jobs gained/lost in 2021 (to-date):</b>	(15,700)

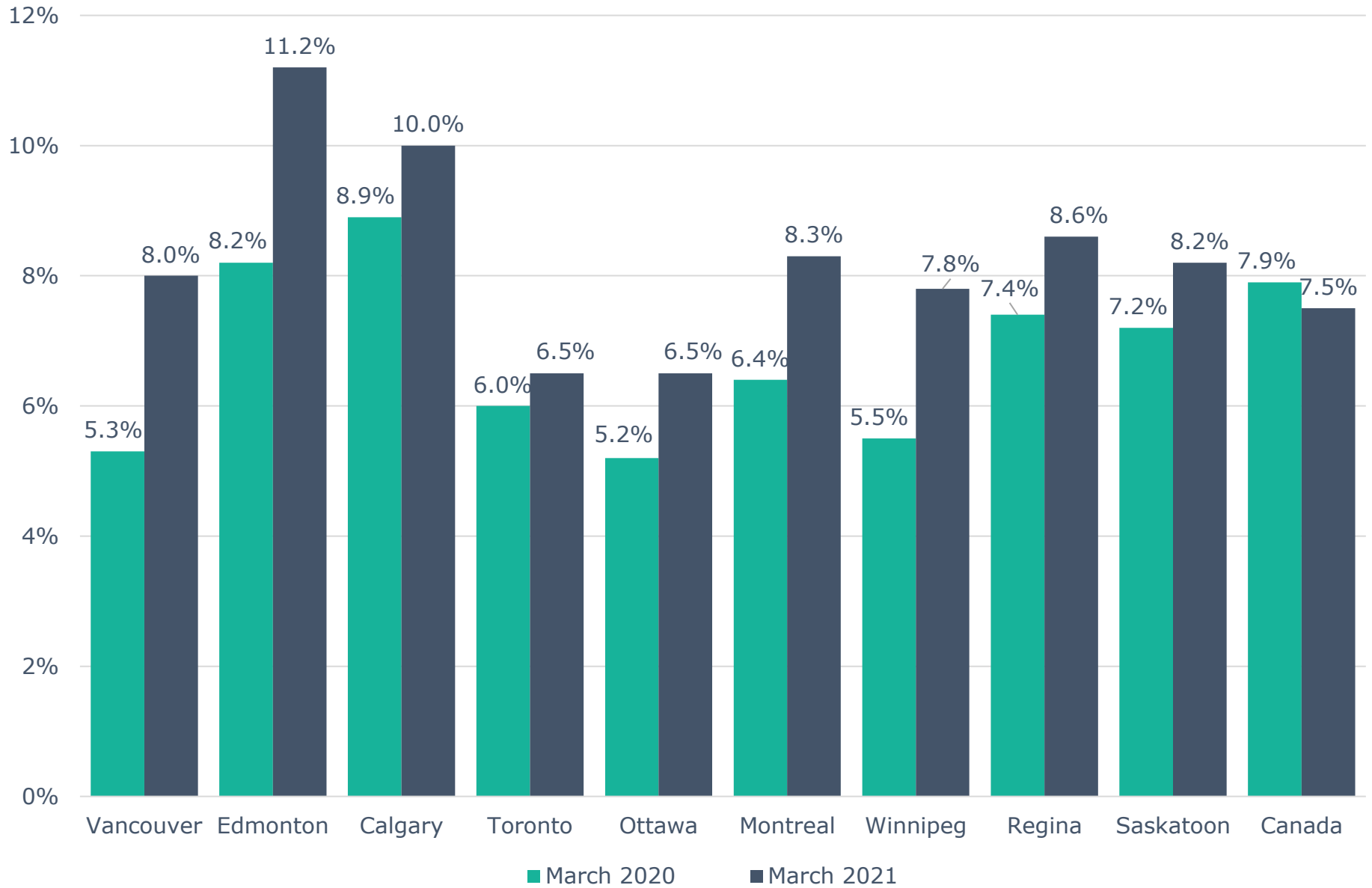
## **Alberta**

<b>Number of jobs gained/lost in 2014:</b>	46,000
<b>Number of jobs gained/lost in 2015:</b>	(40,100)
<b>Number of jobs gained/lost December 2014 to June 2016:</b>	(73,800)
<b>Number of jobs gained/lost in 2016:</b>	(21,500)
<b>Number of jobs gained/lost in 2017:</b>	57,300
<b>Number of jobs gained/lost in 2018:</b>	21,000
<b>Number of jobs gained/lost in 2019:</b>	1,500
<b>Number of jobs gained/lost in 2020:</b>	(109,900)
<b>Number of jobs gained/lost in 2021 (to-date):</b>	74,700

Source: Calgary - Table 14-10-0294-02 (282-0135); Alberta - 14-10-0287-01 (282-0087); Statistics Canada

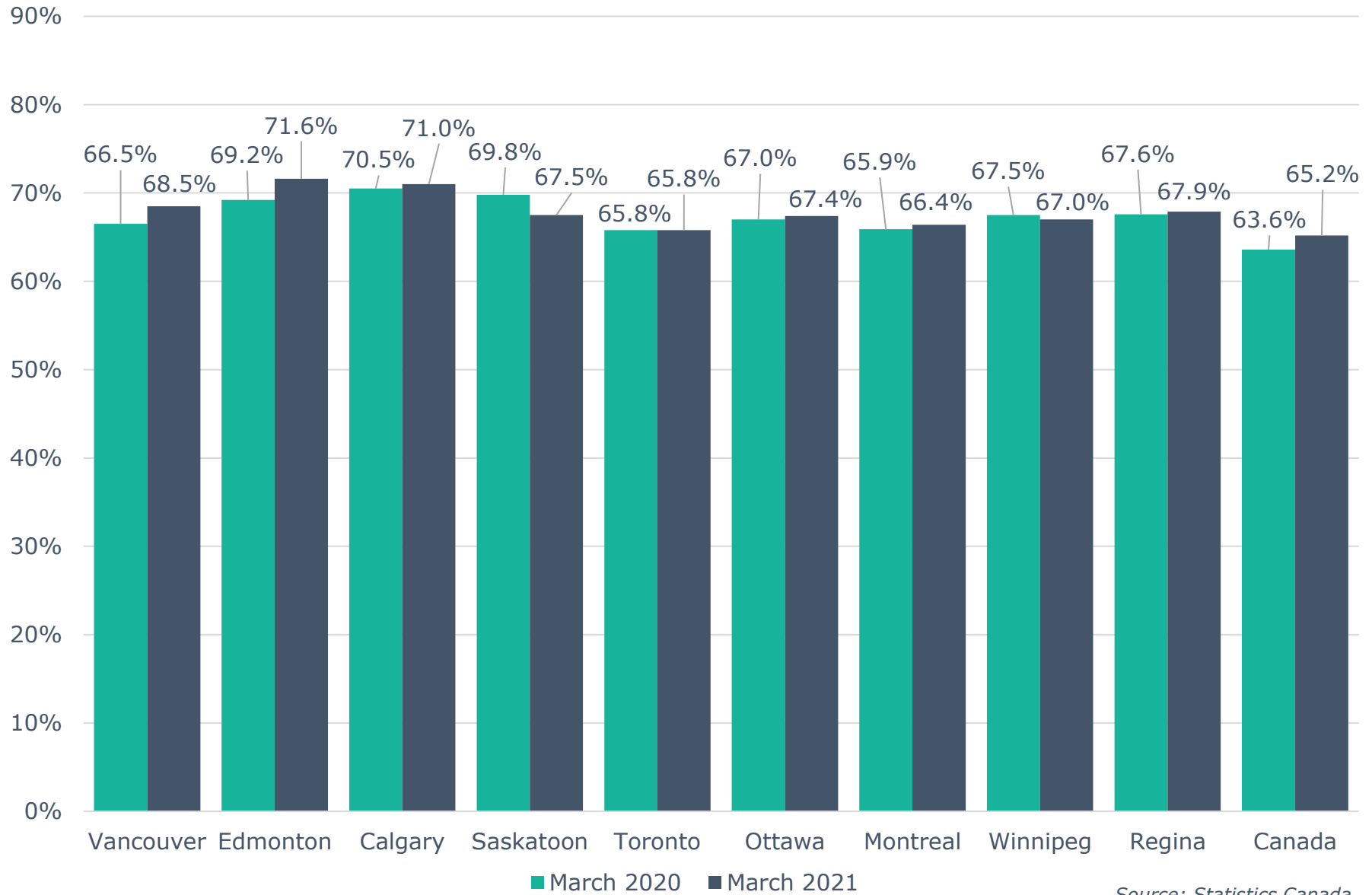
Note: Labour Force Survey, Employment, Seasonally Adjusted

# Unemployment Rate Across Canada



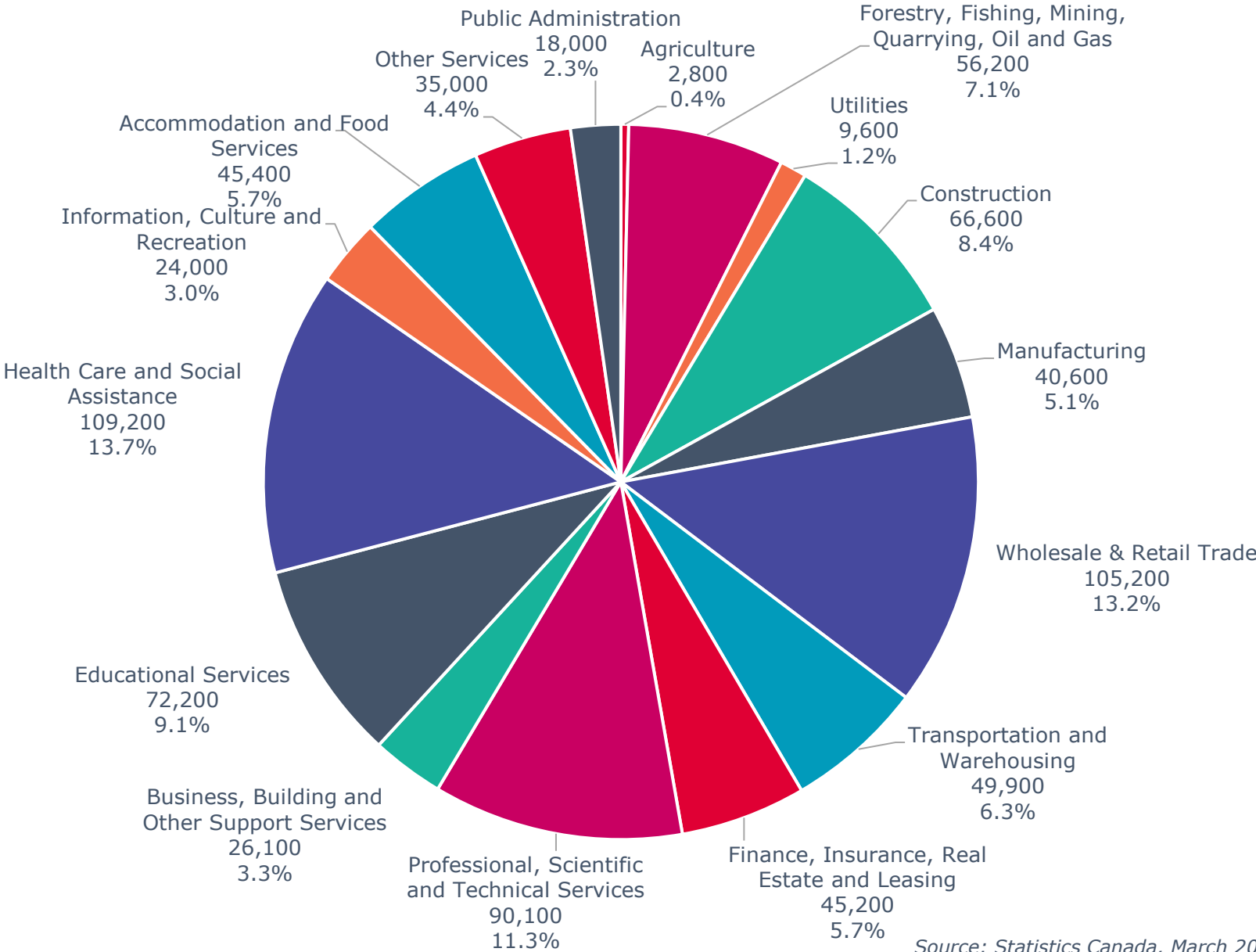
Source: Statistics Canada

# Labour Force Participation Rate Across Canada



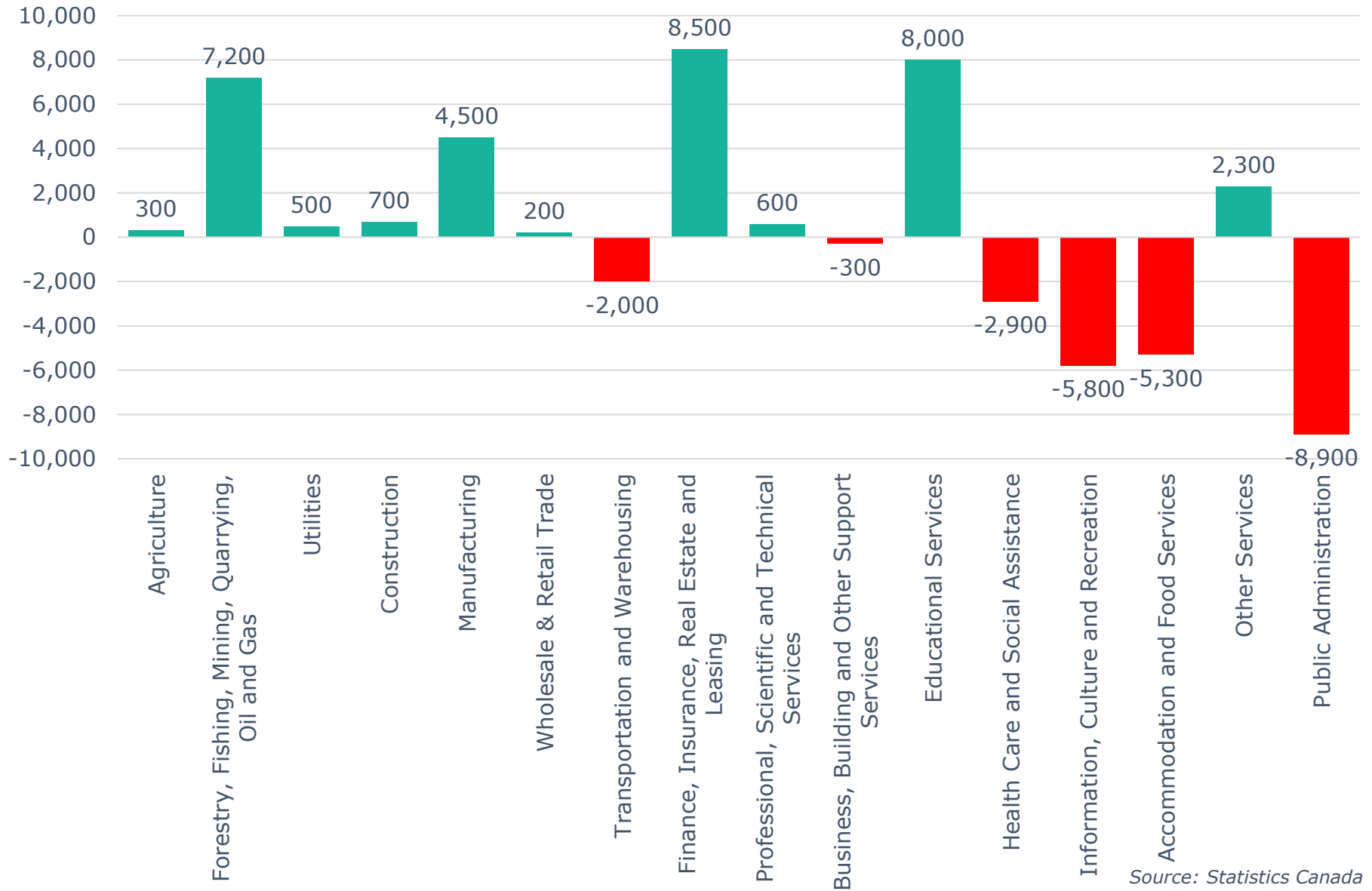
Source: Statistics Canada

# Calgary CMA Employment by Industry (796,000)



Source: Statistics Canada, March 2021

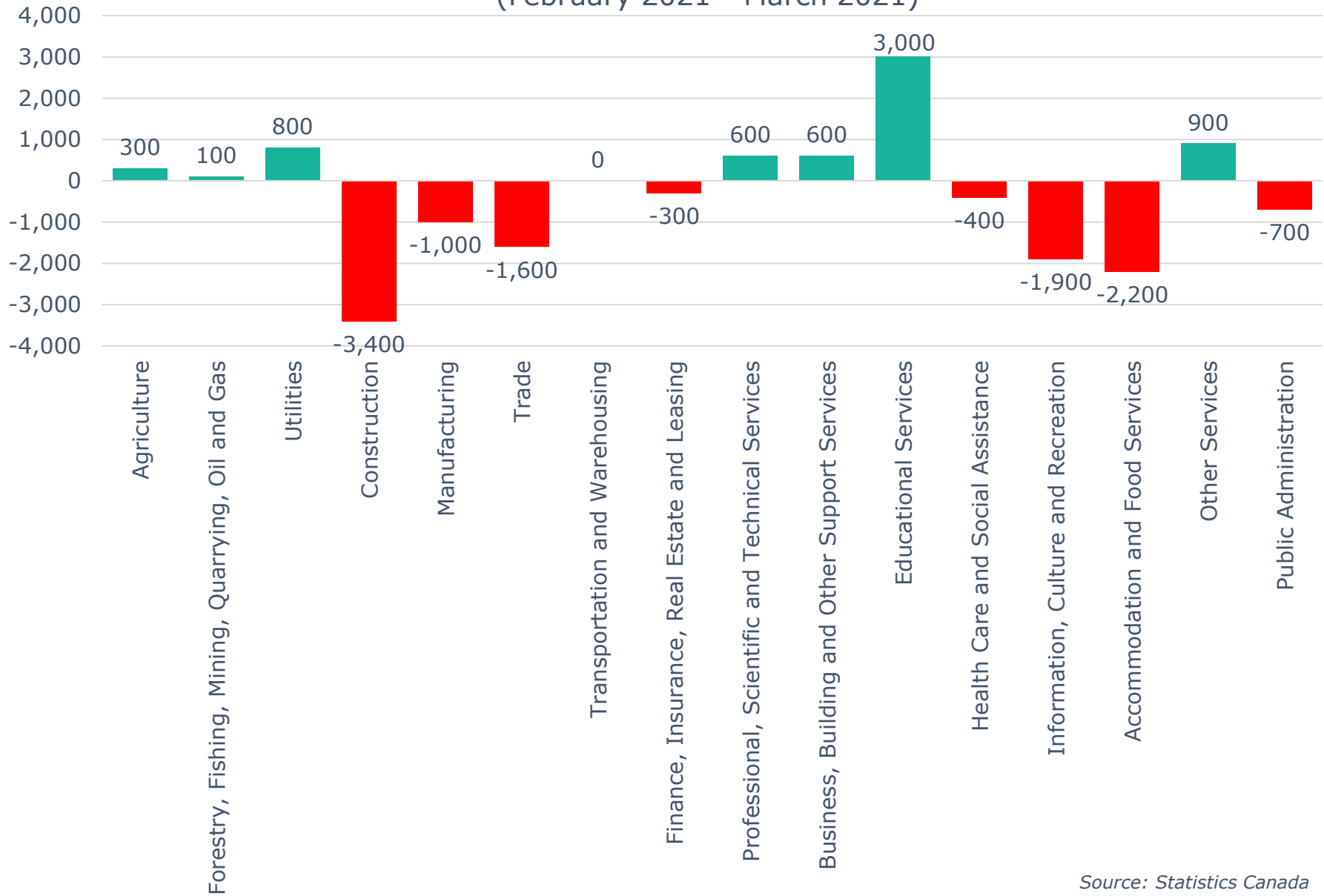
# Calgary CMA 12-Month Net Jobs Gained or Lost by Industry (March 2021)



Source: Statistics Canada

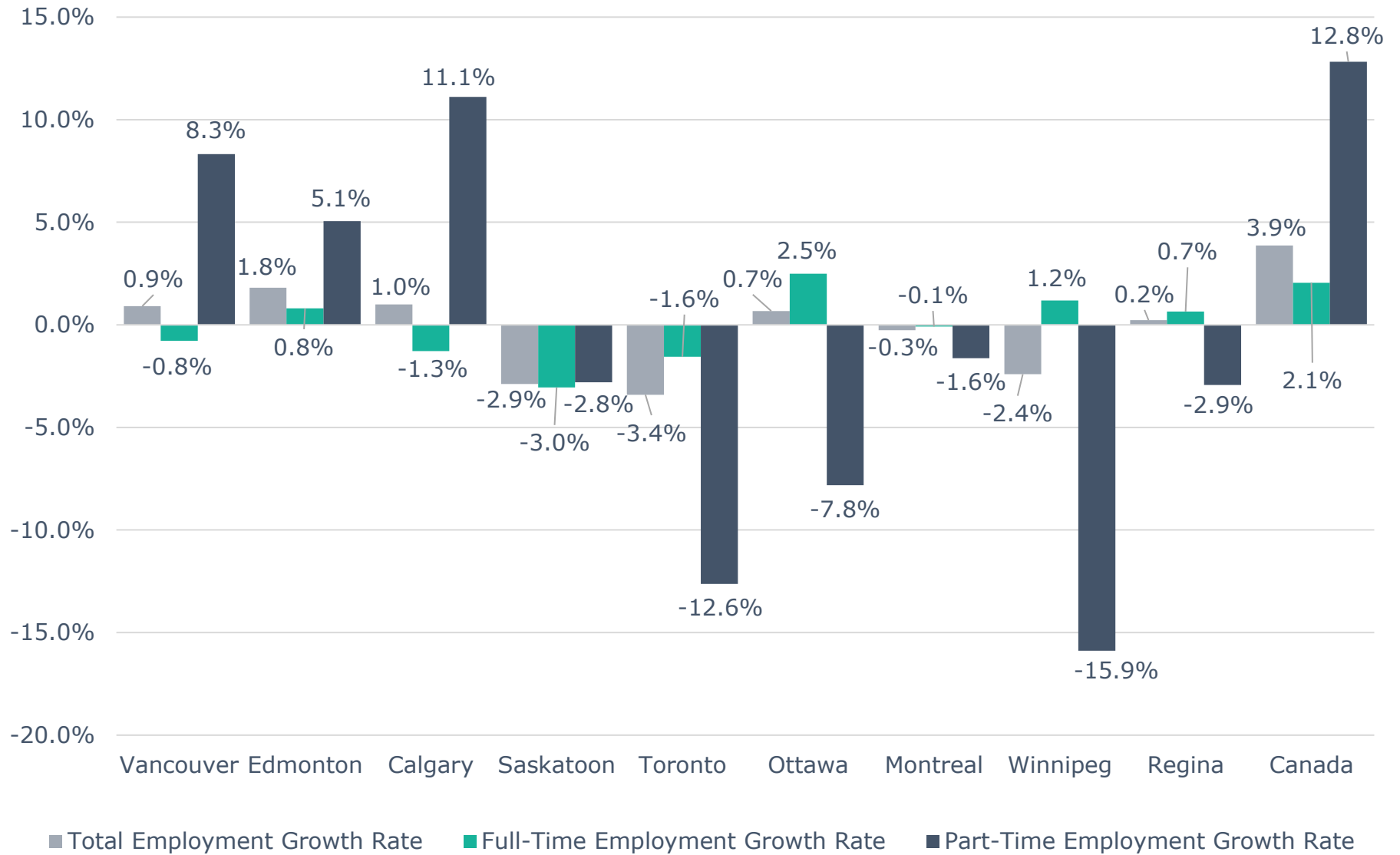
# Calgary CMA Monthly Net Jobs Gained or Lost by Industry

(February 2021 - March 2021)



Source: Statistics Canada

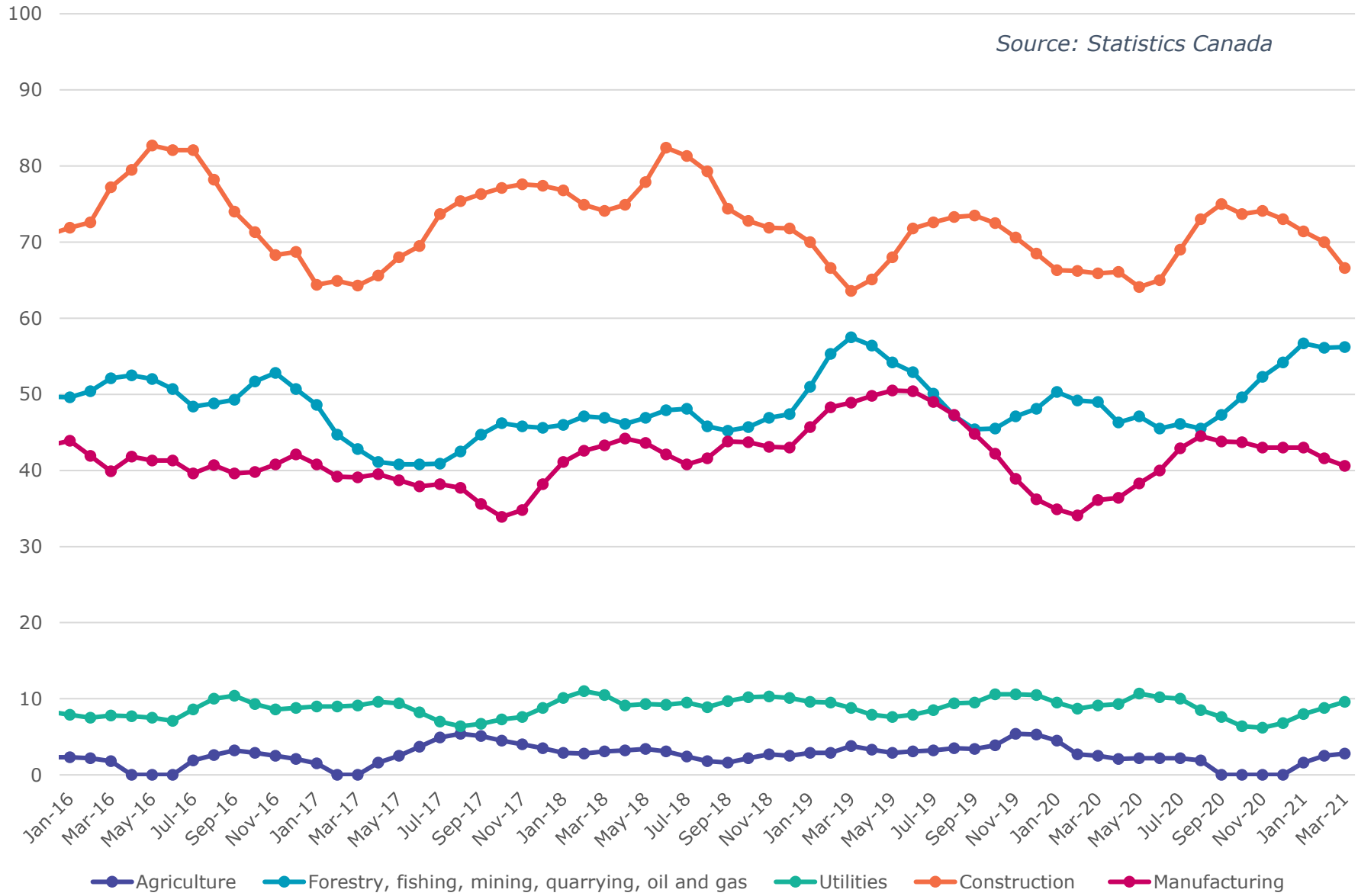
# Annual Employment Growth



Source: Statistics Canada, March 2020 - March 2021

# Calgary CMA Goods Producing Sectors - Number of Employees (In thousands)

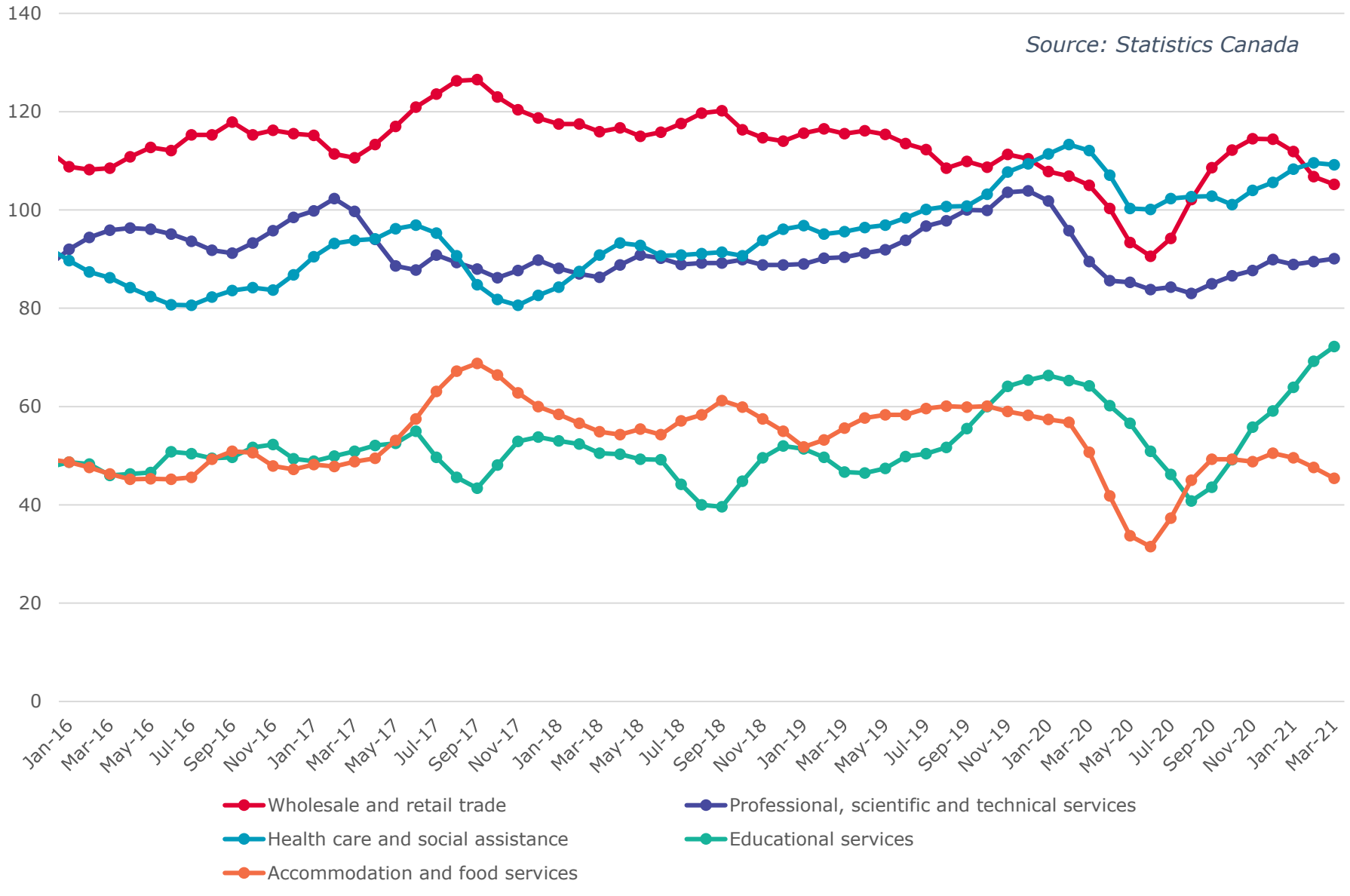
Source: Statistics Canada





# Calgary CMA Largest 5 Services Sector by Number of Employees (In thousands)

Source: Statistics Canada



### Calgary CMA Smallest 6 Service Sectors by Number of Employees (In thousands)

